

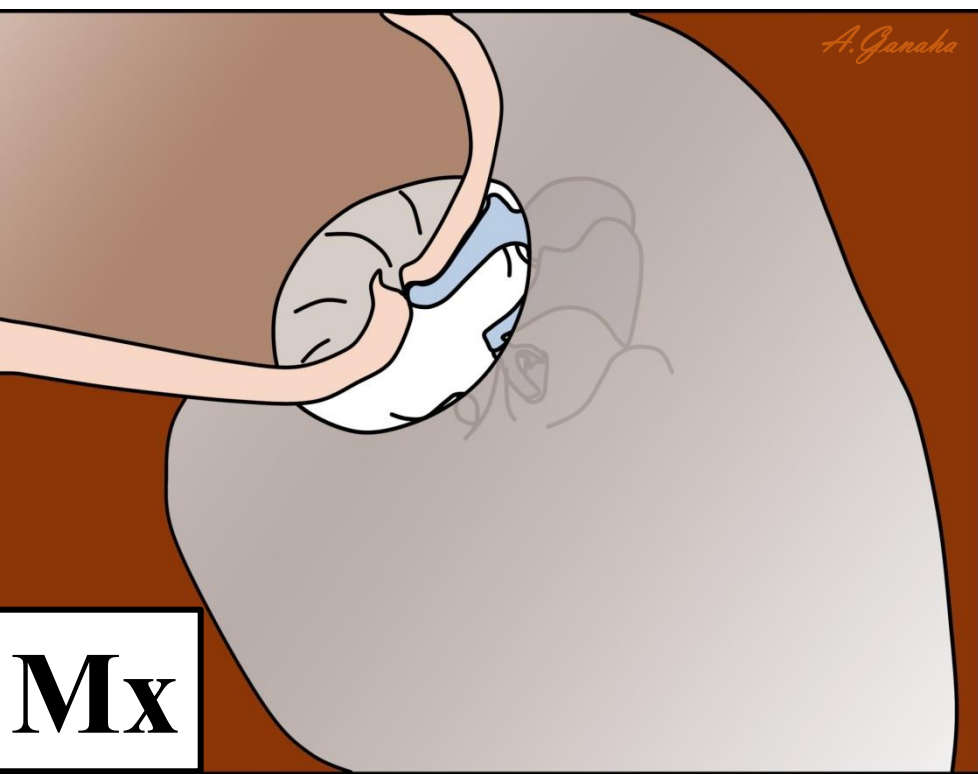
S Stage of surgery

- S1** Primary (first surgery)
- S_{2p}** Planned (2nd look or staged procedure)
- S_{2r}** Revision (unplanned)

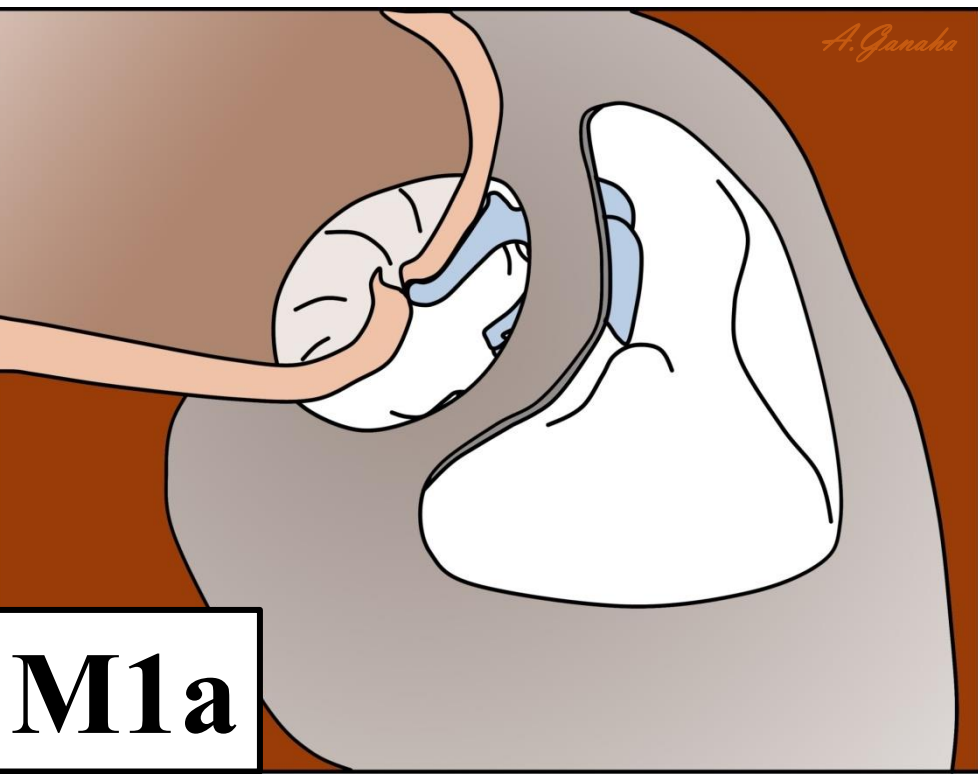
A Approach

- A1** Endoscopic transcanal
- A2** Microscopic transcanal
- A3** Endaural
- A4** Retroauricular

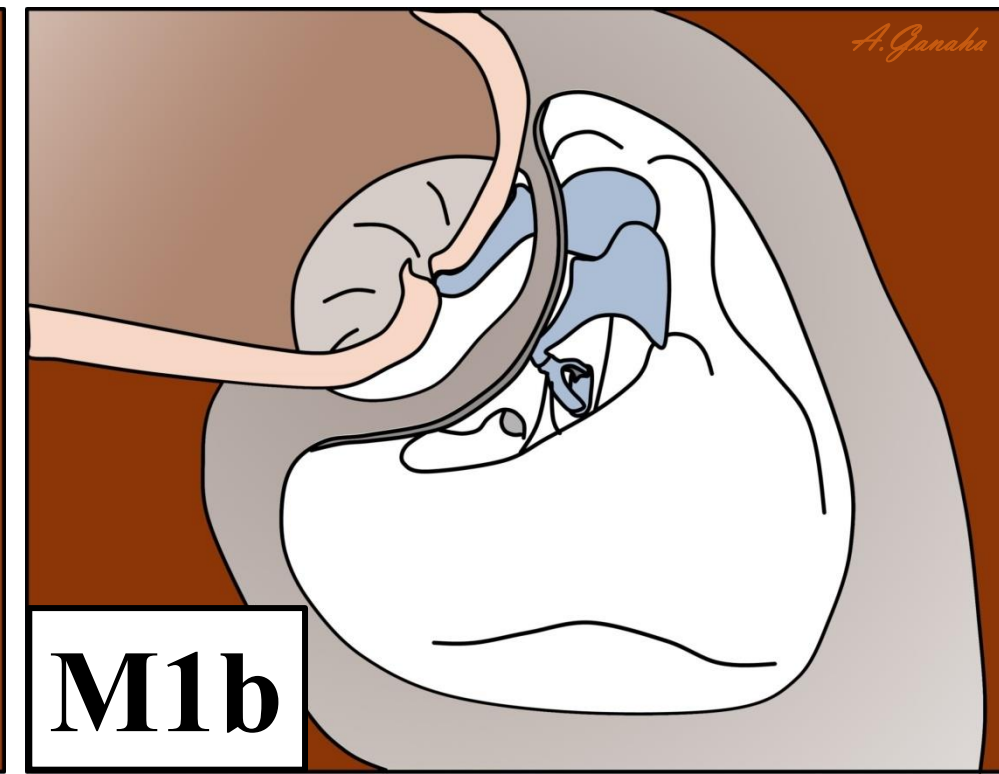
M Mastoidectomy



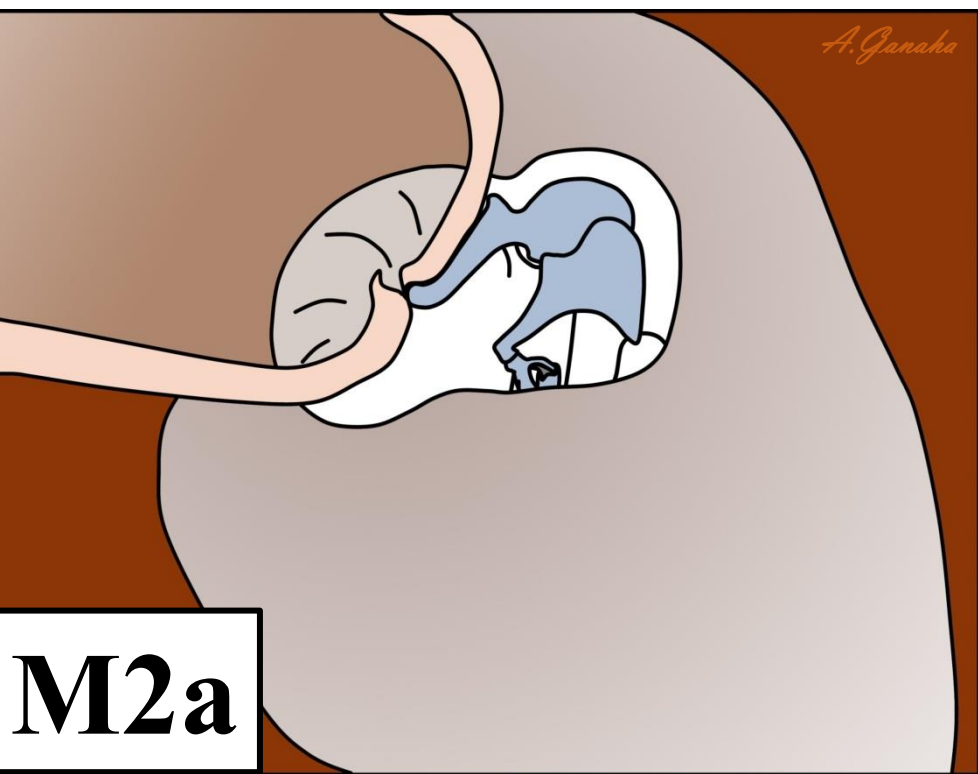
Mx
no mastoidectomy



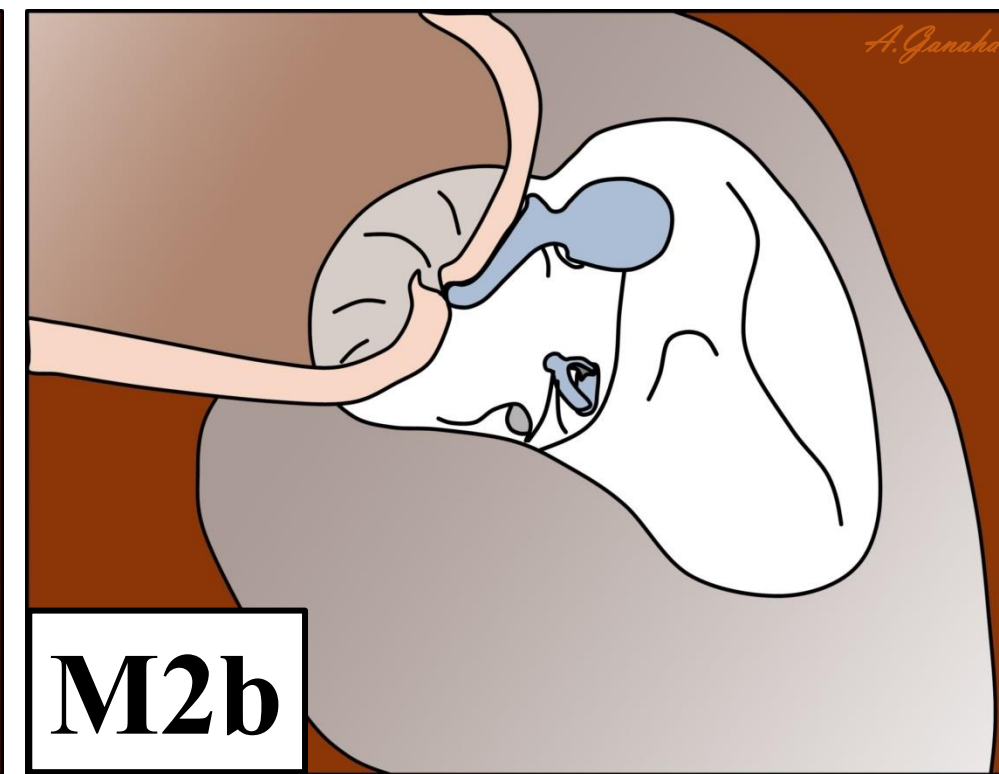
M1a
canal wall preserved



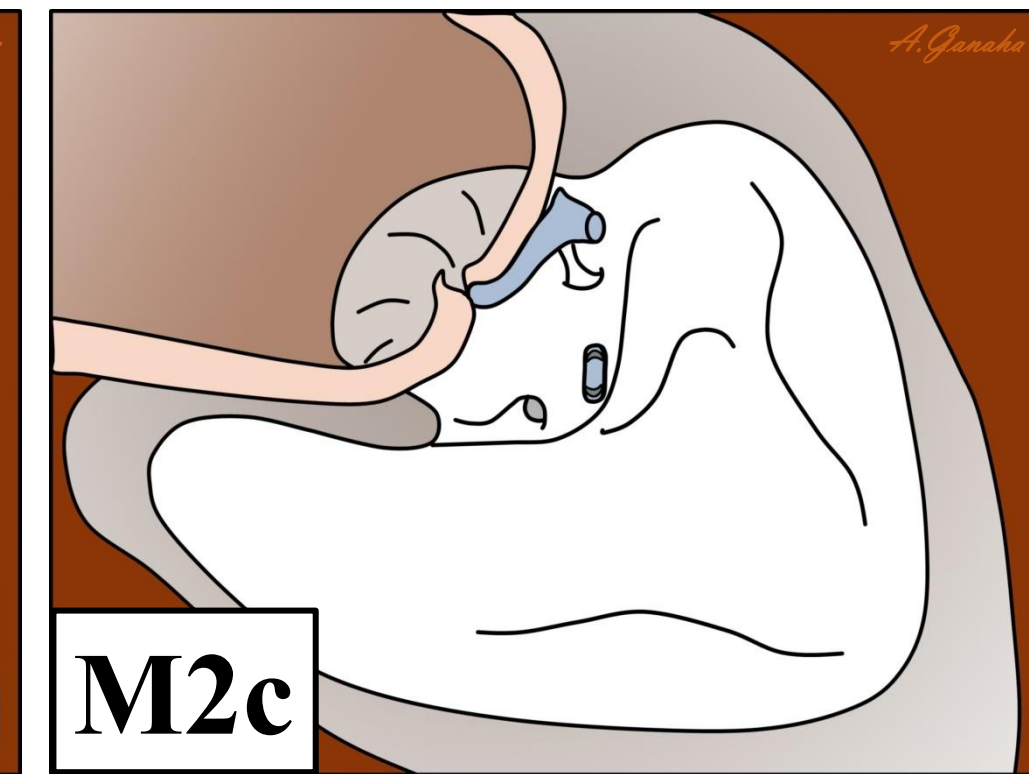
M1b
+ posterior tympanotomy



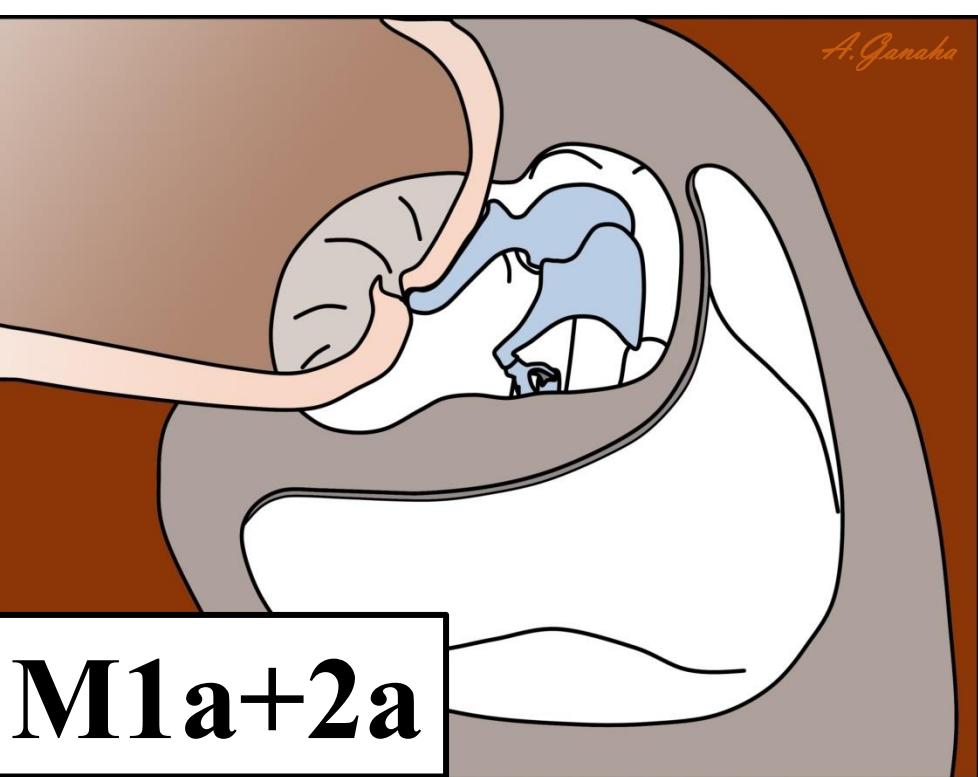
M2a
only scutum removed



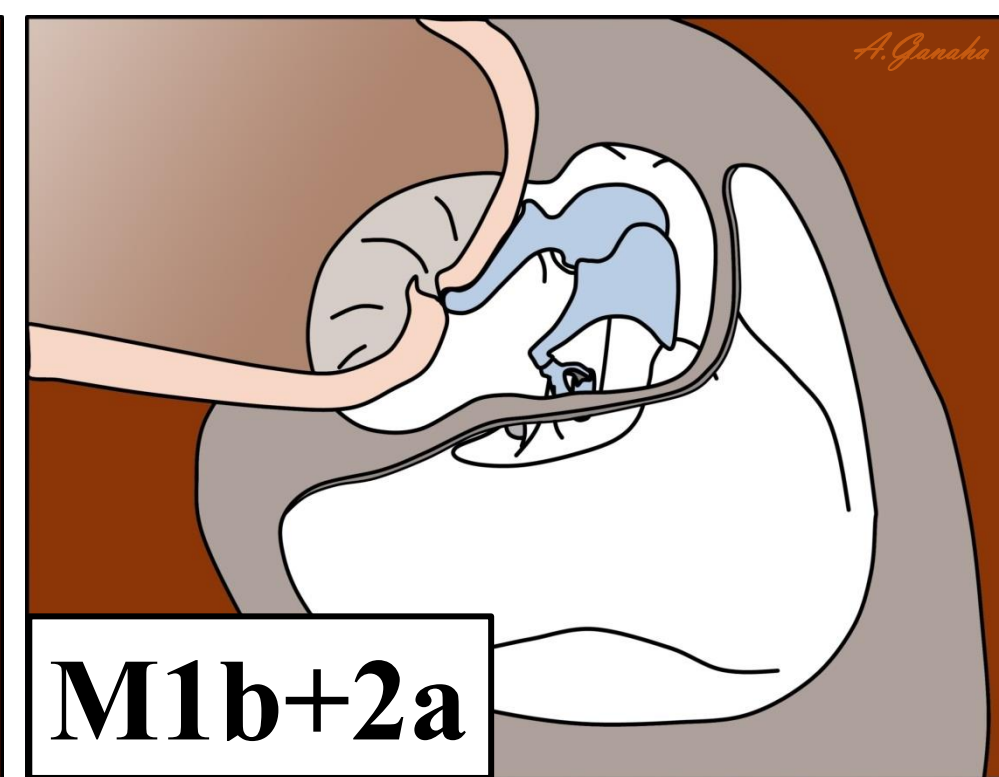
M2b
scutum + postero-superior wall removed



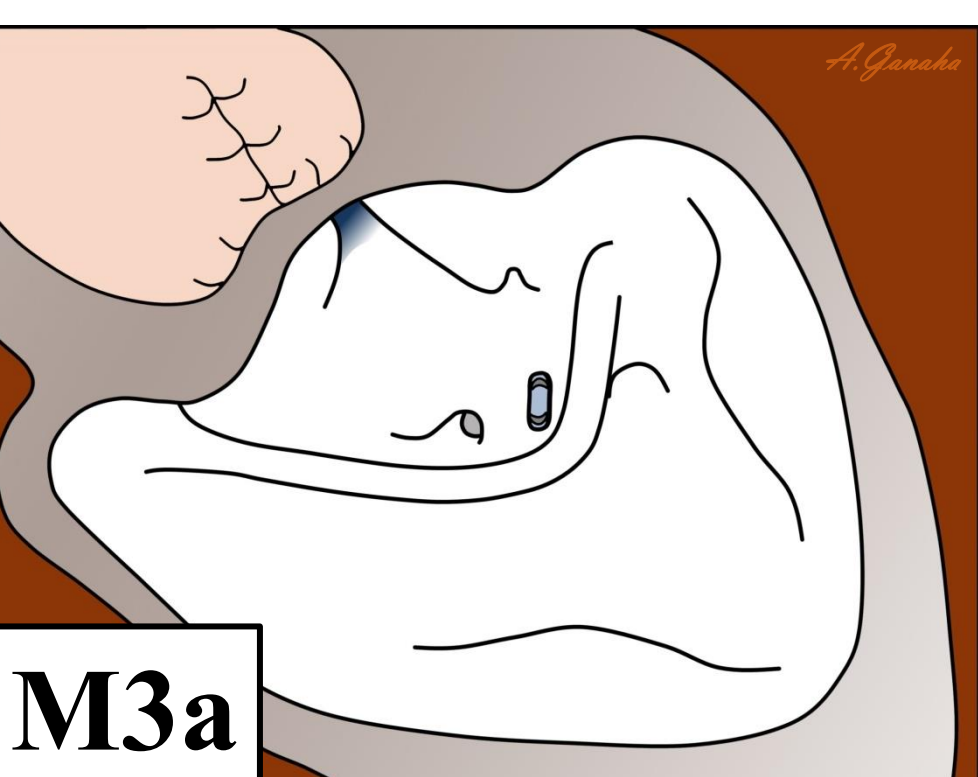
M2c
whole canal wall removed



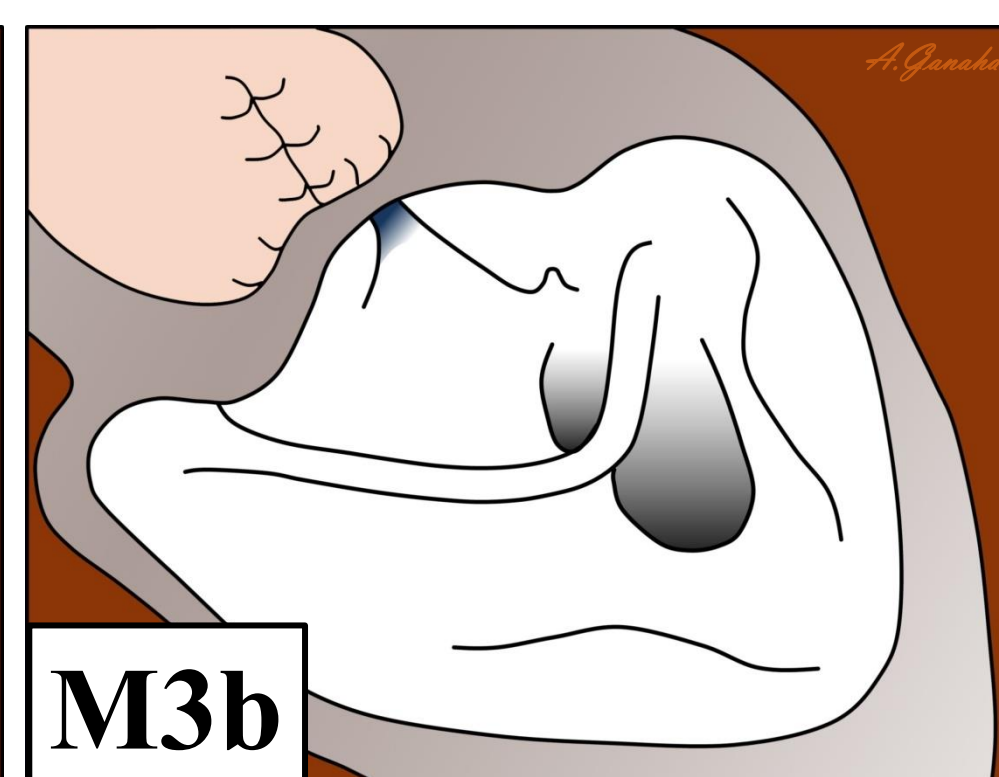
M1a+2a
combination of M_{1a} and M_{2a}



M1b+2a
combination of M_{1b} and M_{2a}



M3a
subtotal petrosectomy; otic capsule preserved



M3b
subtotal petrosectomy; otic capsule removed

E External ear canal reconstruction

- Ex** No external ear canal reconstruction
 - E1** Reconstruction with soft materials[†]
 - E2** Reconstruction with rigid materials[†]
- [†] space behind graft not obliterated

O Obliteration of mastoid cavity

- Ox** No obliteration
- O1** Partial obliteration
- O2** Total obliteration

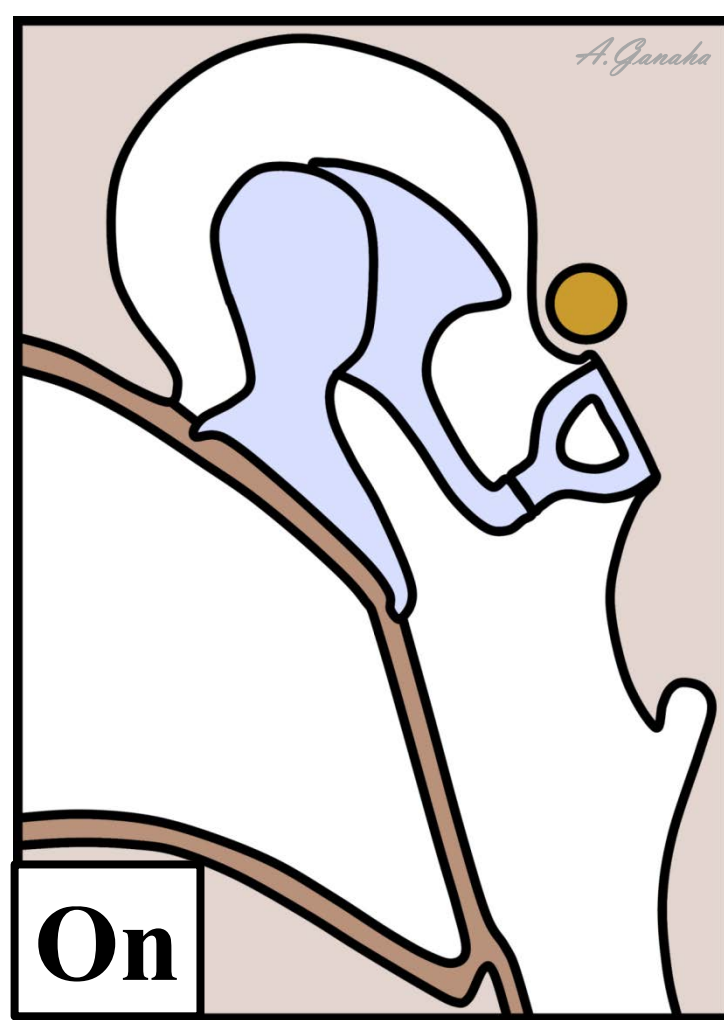
A Access to middle ear

- Ax** No bone removal from the external ear canal wall (flattening of suture line alone is still considered as Ax)
- A1** Widening of the posterior portion of tympanic sulcus (including canal curettage or drilling to visualise the ossicular chain or hypotympanum)
- A2** Partial or circumferential widening of the bony canal (canalplasty)
- A3** Total canalplasty with soft tissue grafting of exposed bone

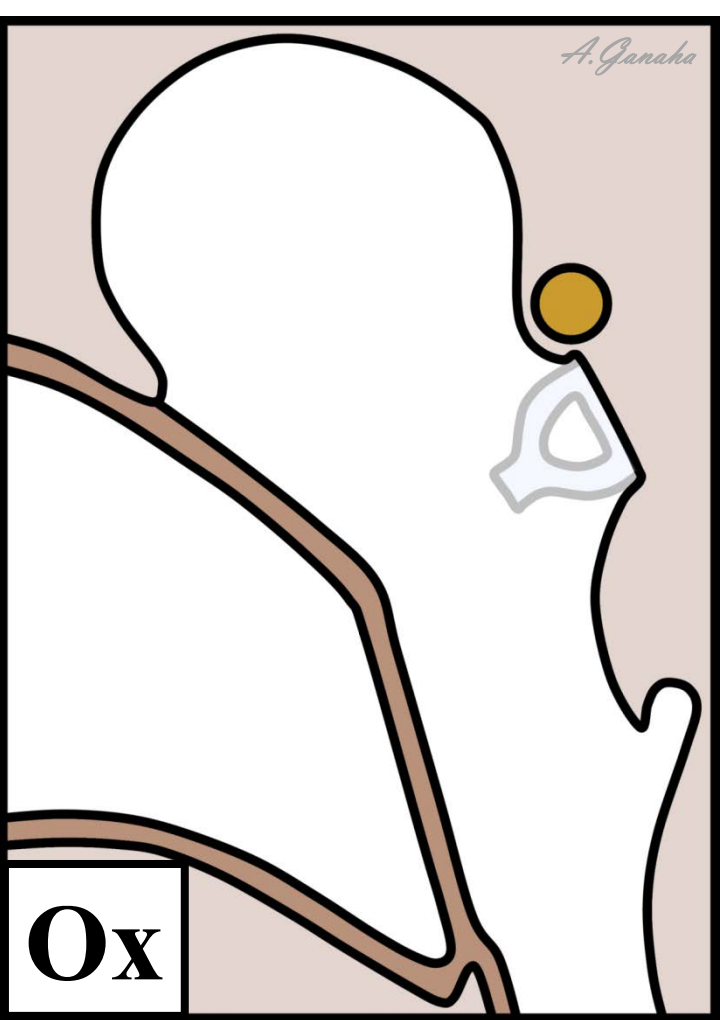
T Tympanic membrane

- Tx** No tympanic membrane grafting performed
- Tn** Original tympanic membrane preserved
- T1** Supplement to intact tympanic membrane (reinforcement)
- T2** Partial tympanic membrane grafting
- T3** Subtotal / total tympanic membrane grafting

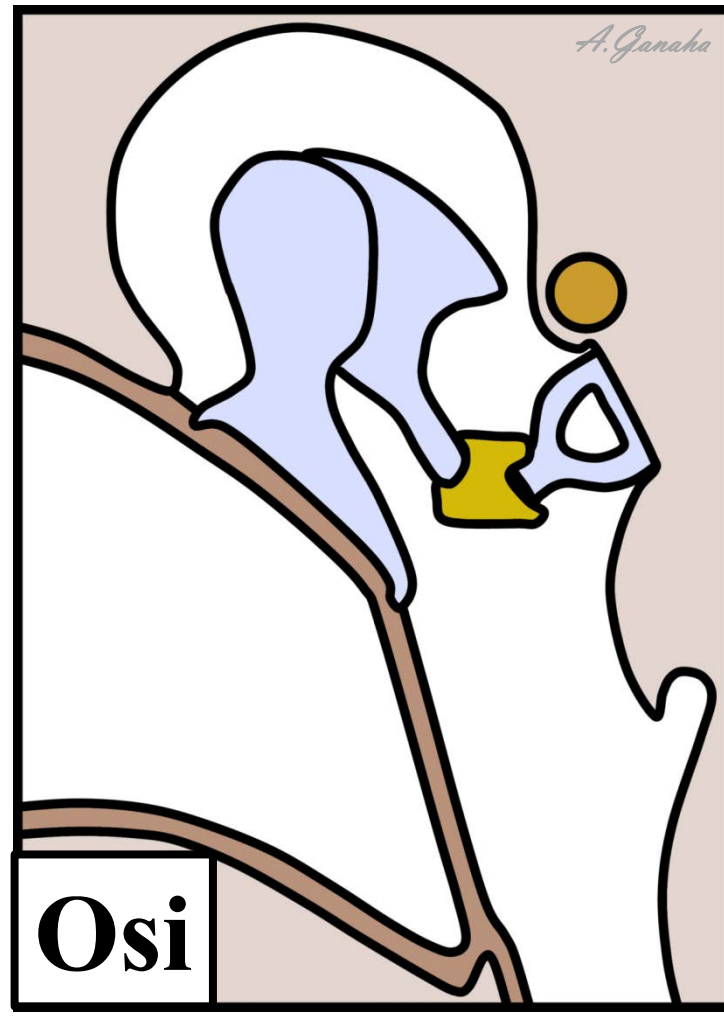
O Ossicular chain



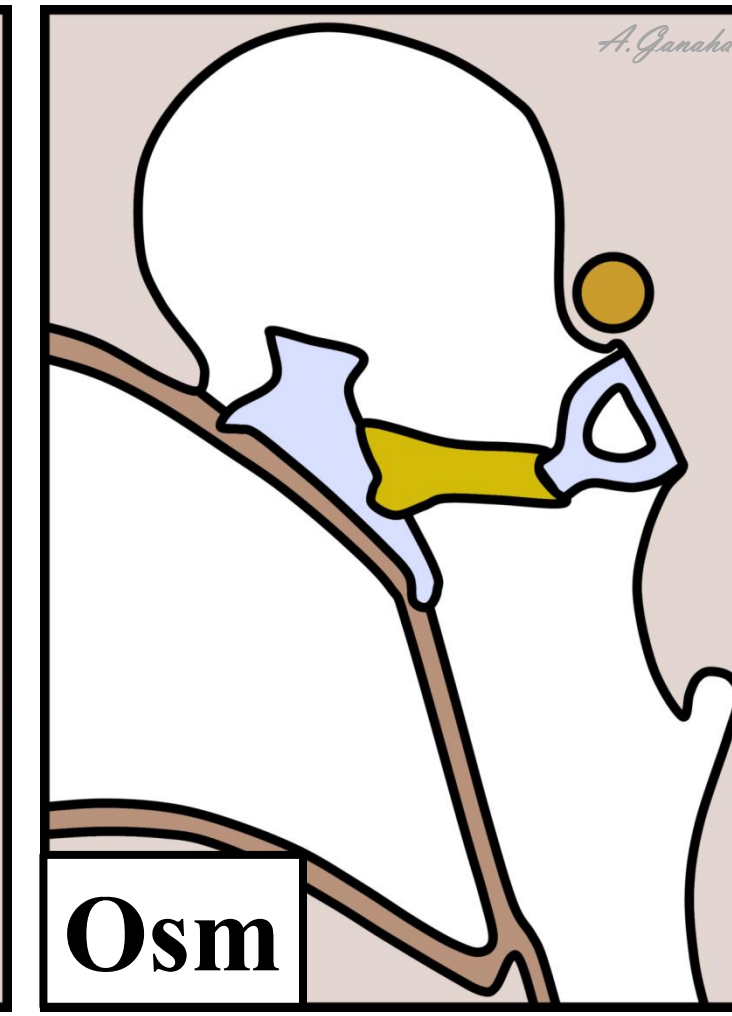
On
intact chain preservation



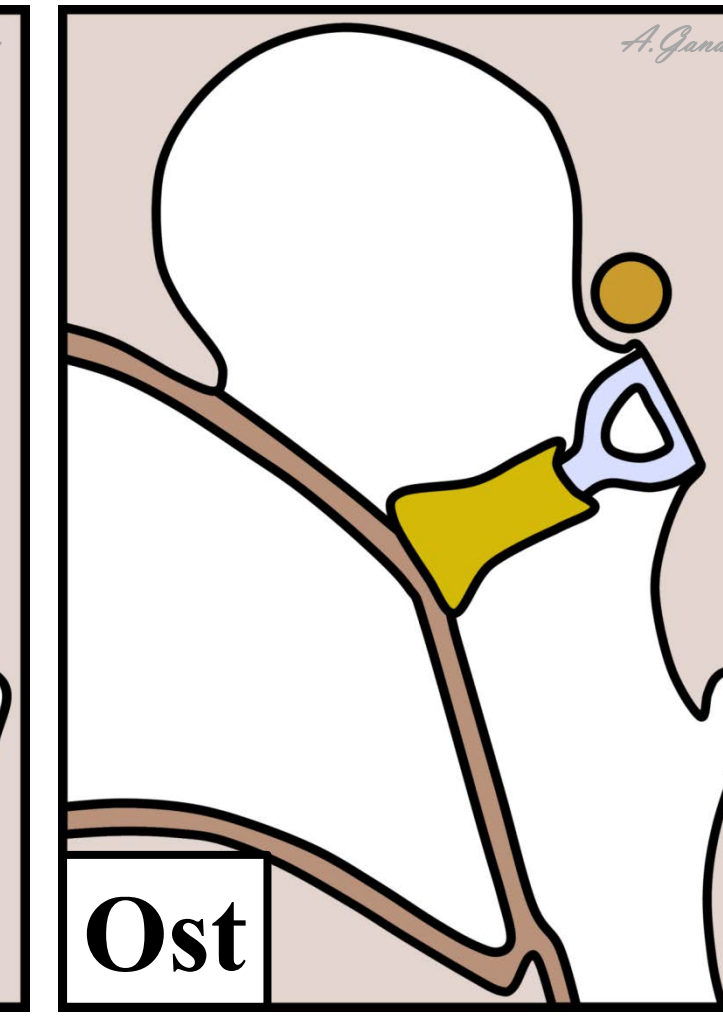
Ox
no reconstruction done



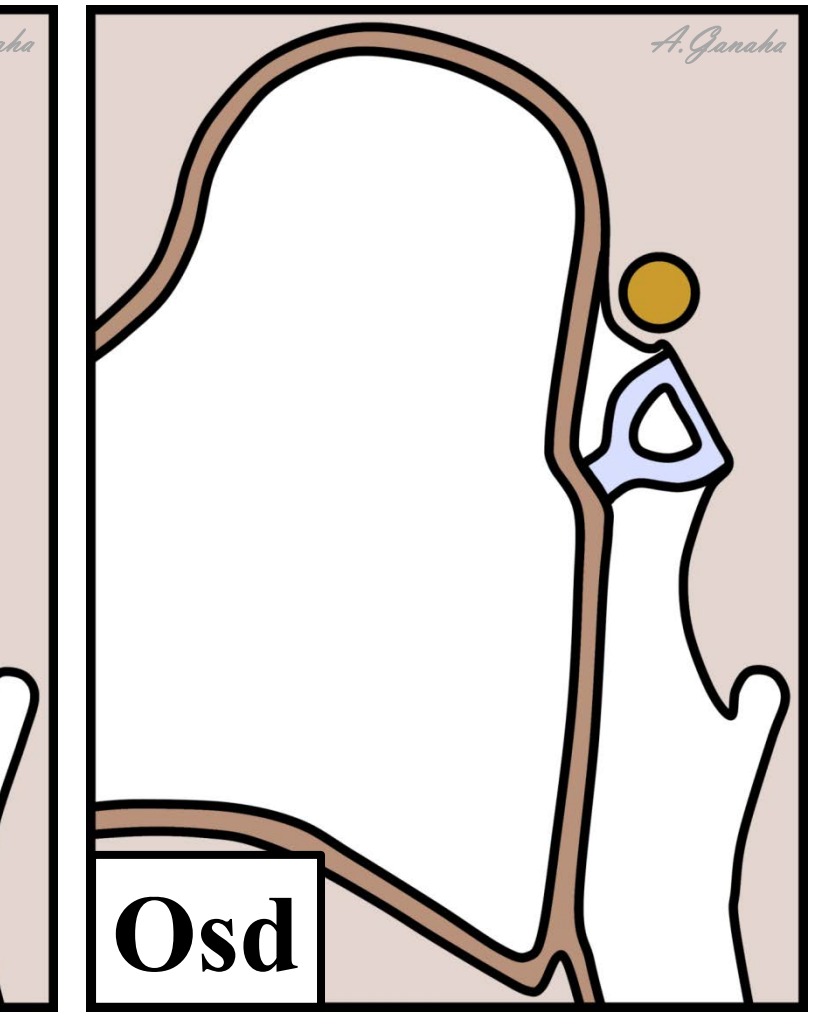
Osi
incus to stapes



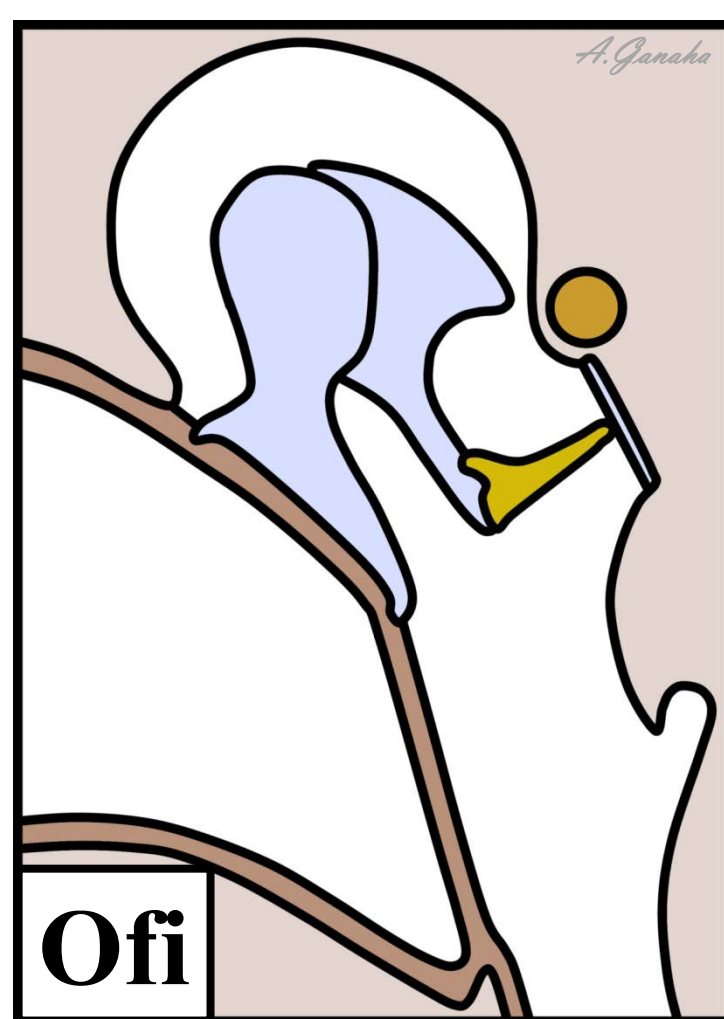
Osm
malleus to stapes



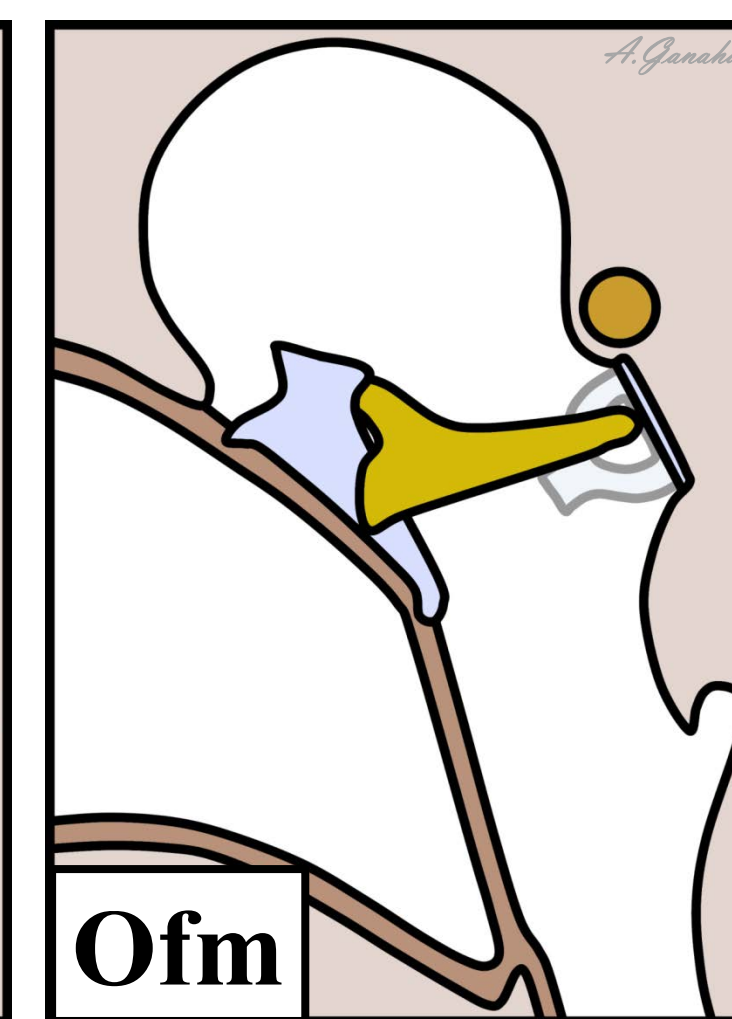
Ost
TM to stapes



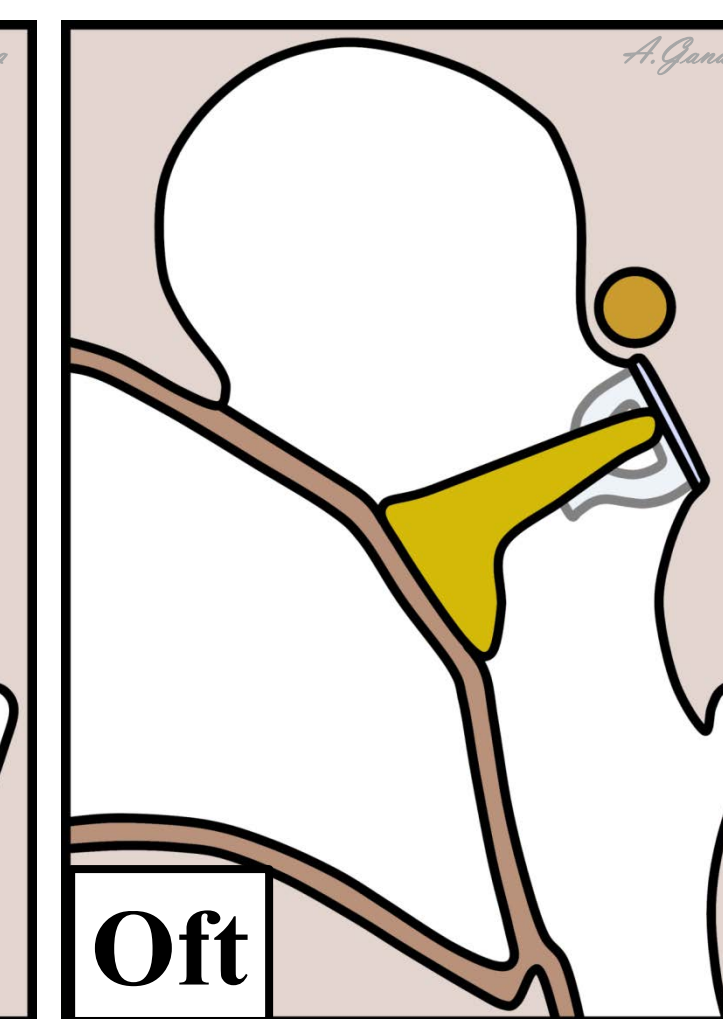
Osd
TM directly on stapes



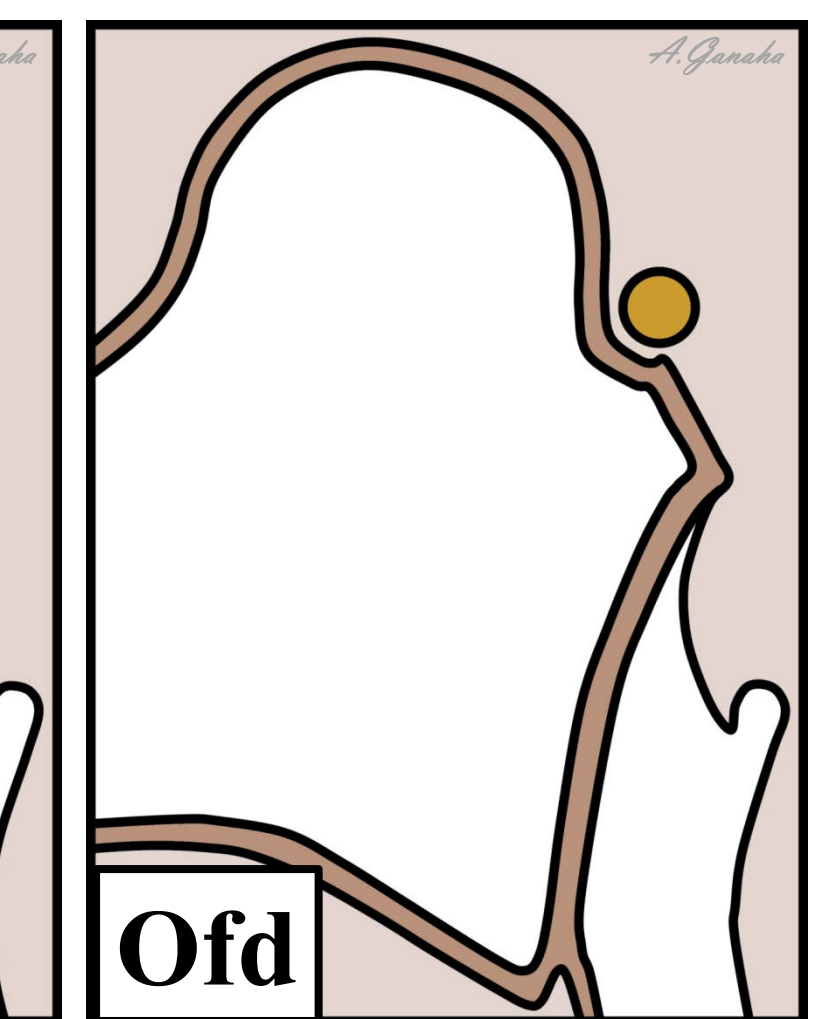
Ofi
incus to footplate



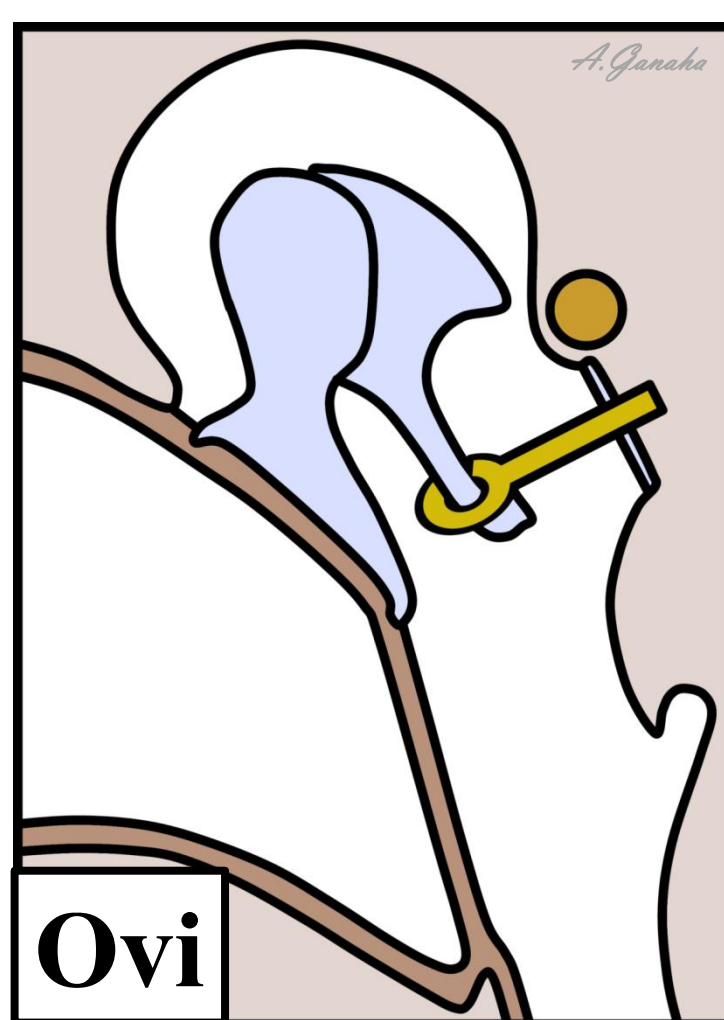
Ofm
malleus to footplate



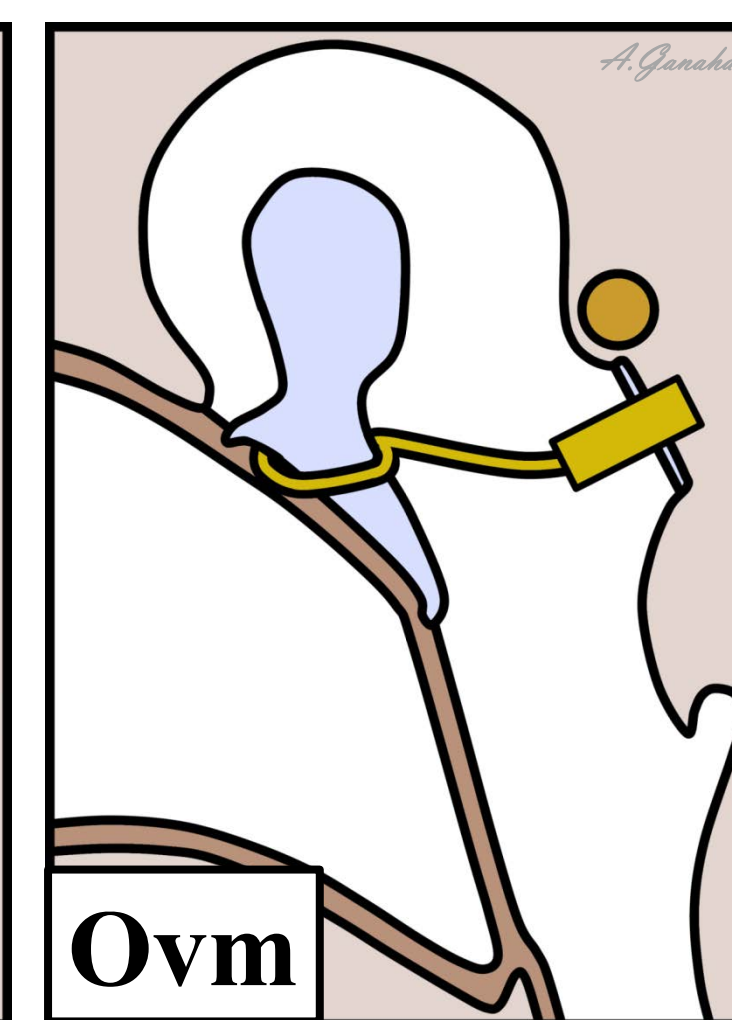
Oft
TM to footplate



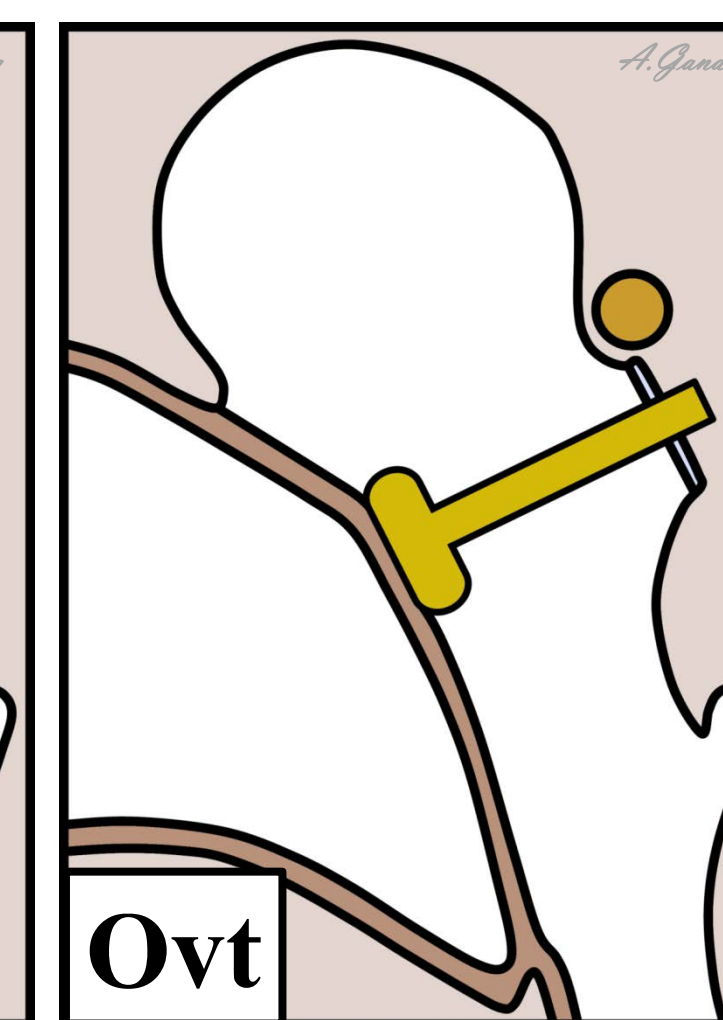
Ofd
TM directly on footplate



Ovi
incus to vestibule



Ovm
malleus to vestibule



Ovt
TM to vestibule